



# Lead Lines



Eastern Pennsylvania Chapter  
International Society of Explosives Engineers  
[www.easternpaisee.com](http://www.easternpaisee.com)

Volume 29 Number 4

Fall 2022

The Eastern PA ISEE welcomes requests for topics, and invites readers' letters and other contributions that relate to drilling, blasting, seismology and explosives engineering.

#### Executive Committee

Scott Mueller, President

215-518-9833

Ethan Huff, Vice President

570-455-5861

Ethan Huff, Treasurer

570-455-5861

John Benedict, Secretary

570-401-4897

#### Board of Directors

Chris Balshi 610-282-8900

Ron Eichler 865-469-7315

Don Haney 570-729-0405

Dave Harrison 724-449-6250

Danny Ray Leach 717-574-4024

Justin Smith 610-926-7070

Doug Rudenko 570-455-5861

Rusty Taft 814-766-2211

Matt Tomlin 610-965-2444

#### Regulatory Committee

John Benedict

#### Program Committee

Danny Ray Leach

#### Training Committee

Dave Harrison

#### Membership Committee

Doug Rudenko

#### Newsletter Editor/Webmaster

Kristin Klemish



## Register Today!

### 2022 Clay Shoot & BBQ

Friday, November 4, 2022

11:30am - 5:30pm

Lehigh Valley Sporting Clays

2750 Limestone St., Coplay, PA

The event is FREE for Members or \$35 for Non-Members

Prizes will be awarded!

# Lead Lines



## Letter from The President

Dear Members,

On November 4th we will host the sixth annual Clay Shoot & BBQ. We have a great lineup of generous sponsors and with just 2 weeks before the event our team rosters are filling up fast. Please get your registrations in today!

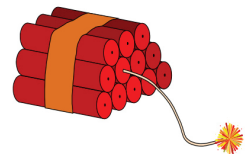
I'd also like to invite all of our members to help me brainstorm ideas for upcoming events. Chapter leadership is eager to bring back our normal line up of quarterly events, but we want to plan events our members are interested in attending. So who do you want to hear speak? What topics are important to you? What social events can you round up your co-workers to attend? Or are you interested in a family friendly event? Please bring your ideas to the Clay Shoot & BBQ, or call or email either myself, Danny Ray Leach or Kristin Klemish and share your ideas.

Best regards,

Scott

### Explosives Insurance

- Exclusive Program for over 25 years
- Dedicated Explosives Service Team
- Over 200 Explosives Clients
- In House Claim Specialist



Call us for a complete insurance review 800-980-9484

Billy Bangs ext 51742  
[bbangs@aga-us.com](mailto:bbangs@aga-us.com)

Jana Kostantewicz ext 51748  
[jkostantewicz@aga-us.com](mailto:jkostantewicz@aga-us.com)



A division of Marsh USA Inc.



## Eastern Pennsylvania Chapter Clay Shoot & BBQ

On Friday, November 4th the Eastern Pennsylvania Chapter will host it's sixth annual Clay Shoot and BBQ. Join us at 11:30am for a BBQ lunch followed by a mandatory 12:30pm safety class and 1pm start at the Lehigh Valley Sporting Clays course in Coplay, PA.

The event is FREE for members. Non-members will be charged \$35 for a Chapter Membership. Registration includes a BBQ lunch, 8 station course with 50 rounds, and friendly competition. Ear protection is provided. You are encouraged to bring eye protection or purchase glasses for \$10.00. Prizes will be awarded for the top three shooters as well as Lewis class shooter placements. We will also be raffling off a Mossberg Silver Reserve 20 gauge over/under shotgun.

If you are interested in registering, please complete the attached form on page 4.

### Thank you to Our Sponsors!

#### **BBQ Sponsor:**

Austin Powder Co. & Maurer & Scott

#### **Ammo Sponsor:**

Wampum Hardware Co.

#### **Gun Raffle Sponsor:**

Rocky Rift Consulting

#### **Station Sponsors & Raffle Prize Donations:**

Blasters Tool & Supply Co., Inc.

Dyno Nobel \* Dimension Supply, Inc.

East West Drill \* EPIROC

Gill Rock Drill Company, Inc.

Independent Explosives \* InstanTel

International Society of Explosives Engineers

J.M. Miller, Inc. \* Keystone Drill Services LLC

Mincon, Inc. \* MTI USA

Nobel Insurance Services

NOMIS Seismographs LLC \* ORICA USA

Pennsylvania One Call System

Rock Hog Drilling Products, Inc.

Sandvik Mining and Rock Solutions

Sauls Seismic, LLC \* Stemlock, Inc.

TEXAS AGA \* Vibra-Tech Engineers, Inc

# Eastern Pennsylvania Chapter Clay Shoot & BBQ



**Friday, November 4, 2022**

**FREE for Members**

**\$35 for Non-Members**

**11:30am - 5:30pm**

**Lehigh Valley Sporting Clays**

**2750 Limestone St., Coplay, PA**

Name\_\_\_\_\_

Company\_\_\_\_\_

Address\_\_\_\_\_

Phone\_\_\_\_\_ Fax\_\_\_\_\_

Email\_\_\_\_\_

**Deadline to register is Friday, October 28, 2022**

Your registration includes a BBQ lunch, 8 station course with 50 rounds and a golf cart per team of 4. Ear protection is provided. You are encouraged to bring eye protection or purchase glasses for \$10.00.

You can bring your own gun and ammo (7.5-9 lead shot only).

Prizes will be awarded!

The event is FREE for Members.

Non-Members will be charged \$35 for a Chapter Membership.

Non-members - please complete the membership form on page 21 and this registration form to sign-up.

**Send to:**

**Eastern PA Chapter I.S.E.E.**

**Ethan Huff**

**c/o Vibra-Tech Engineers, Inc.**

**109 East First Street, Hazleton, PA 18201**

**ethanh@vibratechinc.com**



# Lead Lines



## Letter from The Chief

Dear Eastern PA ISEE Newsletter readers,

We live in an age where instant communication is easier than at any other time in history. At any time, we can pick up an assortment of devices to make a call, send a message, or communicate an important idea to a team of individuals all working toward a common goal. Historically however, DEP has not communicated clearly and consistently with the dedicated professionals in the blasting and explosives industry.

I have thought for a long time that we would benefit from having short (2-4 pages) routine newsletters that would communicate new ideas, regulatory changes, safety notes, policy changes, and more, both to our explosives program field staff and our industry clients, with the hope of creating and maintaining a higher level of consistency and cooperative interaction. My vision for this is to use it as a sort of message board that informs on important changes and issues, and as resource that will sharpen our skills and perspectives with regard to the job we each do on both sides of the industry, from the day-to-day mundane tasks to technique to incident handling.

Initially, I am hoping that this will be a monthly circular beginning around the middle of this month (October). Each issue will actually be a set of two newsletters: one written for staff consumption, and a parallel issue for our industry clients. The hope is that by doing so we are communicating similar sets of information both internally and externally but keeping in mind that the audience is different, creating consistency in the way in which we regulate and relate to the explosives industry. It is my hope that this will ultimately foster a spirit of openness and cooperation between the industry and our staff. If you are a licensed blaster with your email address in our records you should already be on the list to receive the initial newsletter. There will be a link to opt out if you so choose. If you do not receive the newsletter by the end of the month but you wish to, please go to <https://forms.office.com/g/B68GijdX9M> to sign up.

This project is a work in progress, and I am sure it will continue to evolve as necessary, so please feel free to let me know what you think and how it can be made better.

Work safe!

Christopher D. Catalano

# Lead Lines



TIM O'QUINN

SALES REPRESENTATIVE BOOM DRILLS & EXPLORATION

Sandvik Mining and Rock Technology  
3200 Highlands Parkway, Suite 200, Smyrna, Georgia 30082  
Mobile+1 276 312 2273  
timothy.oquinn@sandvik.com

ROCKTECHNOLOGY.SANDVIK



JUSTIN SMITH  
Drilling & Blasting Coordinator

Excelsior Industrial Park • P.O. Box 69 • Blandon, PA 19510  
Phone 610-926-7070, Ext. 123 • Fax 610-926-7171  
E-mail: jsmith@schlouch.com • Mobile 484-256-2025



**Mass Rock Services, Inc.**  
*Drilling & Blasting Specialists*

[www.saundersblasting.com](http://www.saundersblasting.com)

***Come to Work for One of the Most Reputable Drilling & Blasting Companies in New England***

## **Experienced Blasters:**

- **\$90k - \$100k or more depending upon qualifications**
- **401K, Vacation, Health Insurance, Life Insurance**

Applicant should be able to lead and manage drilling & blasting operations to meet the customers' needs.

We are a relatively small Drilling & Blasting firm with a 30-year impeccable reputation for  
**Integrity, Excellence, Performance & Safety.**

If you are a self-motivated individual with a good work ethic and would like to join our team and be involved in the entire process, please contact us.

**Experienced Drillers**  
**\$28.00-\$32.00 hour**  
**Plus Benefits**

**68 Main St.**  
**Lancaster, MA 01523**  
**O: 978-365-7611**  
**C: 978-265-4434 David Saunders**  
**dsaunders@saundersblasting.com**

**Helpers**  
**\$20.00-\$24.00 hour**  
**Plus Benefits**



**Mine Safety and  
Health Administration**

## Powered Haulage Safety

So far this year, nine miners have been killed and 185 have been injured in accidents involving powered haulage equipment such as shuttle cars, scoops, locomotives, front end loaders and more. Year to date, this is the highest number of powered haulage fatalities since 2006. The safety of mining's most precious resource – the miner – is a critical mission at the Mine Safety and Health Administration. That's why we are hosting a national Stand Down for Safety Day on July 20 focused on powered haulage and vehicle rollovers to help educate miners, save lives and prevent injuries. On July 20, all levels of MSHA enforcement staff will visit mines to meet with miners and operators to emphasize the need for adhering to best safety practices for powered haulage, vehicle rollovers, and miner training to reduce fatalities and injuries.

Continued on page 9



Epiroc Service Center  
4479 Chambers Hill Rd  
Harrisburg PA 17111  
717-257-9300



An aerial photograph of a city, likely San Francisco, with a large, deep crater in the foreground. The crater is filled with debris and dust, and a car is visible on the right side of the crater. The city is visible in the background, with hills and buildings.

**YOU CAN'T MANAGE  
WHAT YOU DON'T MEASURE.**

GeoSonics  Vibra-Tech

**VIBRATION**

**GEOTECHNICAL**

**NOISE**

**DUST**

**ENVIRONMENTAL**

GeoSonics/Vibra-Tech provides expert monitoring and consulting services to help mitigate risk. Our Re:mote Monitoring Technology continuously collects and posts to a customized website, while keeping personnel notified through email and text alerts, so your data is always at your fingertips.

[geosonicsvibratech.com](http://geosonicsvibratech.com)





## Safety Continued

MSHA has also developed guidance intended to help miners, mine operators, and contractors prevent accidents caused by working with, on, or near powered haulage equipment. The guidance contains best practices, links to videos and training resources, including other additional materials.

Continued on page 10



**MAURER & SCOTT  
SALES, INC.**

122 E. Thomas Street  
Coopersburg, PA 18036-2100

Office 610-282-8900  
Fax 610-282-9800  
Email: [info@maurer-scott.com](mailto:info@maurer-scott.com)

*Rocky Rift Consulting, Inc.*

- Pre-Post Conditional Inspections
- Seismic Monitoring
- Damage Claim Investigation
- MSHA Training
- Blasting/Utility Inspector



DON HANEY  
966 Calkins Road  
Milanville, PA 18443

(570) 729-0405  
Cell (570) 656-2273  
[dlhaney@ptd.net](mailto:dlhaney@ptd.net)



# Mincon<sup>TM</sup>

**NORTHEAST SERVICE CENTER - HARRISBURG, PA  
717-287-4910**

**HERE TO SUPPORT ALL OF YOUR DRILLING NEEDS**



The Driller's Choice



**JIM CRAWFORD**

**NORTHEAST US ACCOUNT MANAGER  
717-975-7195**

**INNOVATING LOCALLY, LEADING GLOBALLY**

[Mincon.com](http://Mincon.com)





## Safety Continued

Join us in getting the word out about mining hazards and how to keep workers safe.

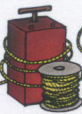
### Mobile Equipment at Surface Mines

Surface mining vehicles can be several stories tall and are capable of destroying smaller vehicles that cannot be seen by the operator. Traffic controls, training, and avoiding



Continued on page 11

*Dimension Supply*



Energetics for Industry

**DIMENSION SUPPLY, Inc.**

1034 Oak Grove Road, Morrisdale, PA 16858

814/571-2484 C 814/343-4700 O 814/343-4800 F

jkwhitaker@verizon.net

**Kirk Whitaker, President**



**American Rock Mechanics, LLC**

LEHIGH VALLEY'S  
PREMIER DRILLING AND BLASTING COMPANY

610-965-2444



www.amroc.us

**HAYDUK ENTERPRISES, INC.**

**1-800-542-5352**

**BLASTING AND DRILLING**

**JACOB HAYDUK**

257 Riverside Drive  
Factoryville, PA 18419  
e-mail: jacobhayduk@outlook.com

Local: (570) 945-3242

Cell: (570) 903-1597

Fax: (570) 945-5627



**Ed Ciocco**

Account Manager  
eciocco@iexpSCO.com  
484.614.9313

**Mark Proctor**

Account Manager  
mproctor@iexpSCO.com  
315.430.4683

2700 W. Center Street • Tremont, PA 17981



## Safety Continued

### Seat Belt Usage

MSHA engineers estimate that three to four miners' lives could be saved each year if adequate seat belts were provided and worn. Warning systems such as chimes can remind drivers to buckle up, while interlock systems can prevent the vehicle from moving if the belt is unbuckled.

### Conveyor Safety

Belt conveyors and their components pose serious risks to miners working on or around them. It's important to install adequate guarding to prevent contact, provide and use crossovers and cross unders, and lock out energy sources and block motion whenever performing maintenance.



Robert McClure  
President

**RAM** INC  
Explosive Technical Services

O (740) 363-6976  
M (614) 296-7116

r.mcclure@ramets.com

R.A. McClure Inc.  
2116 Hardin Lane  
Powell, OH 43065 USA

www.ramets.com

**Michael J. Pruss Consulting, LLC**

Michael J. Pruss  
33 Oak Lane  
Shippensburg, PA 17257  
Email: prussmike924@gmail.com  
Phone: (717) 753-5850

### SUREfire Starter: KEY TO A BETTER BLAST

The updated **SUREfire Exploder** generates a discharge right inside the shock tube, initiating with great reliability.

#### BENEFITS OF SUREfire SHOCK TUBE STARTER:

- High reliability & durability
- High energy electrical initiation pulse
- Low consumables, no primers – thousands of shots on one small, 9 volt alkaline battery
- Charge time to all fire voltage 0.048 seconds
- Comfortable pocket size; lightweight
- 0.4 Joules @ 2200 volts

**Call 201.459.6384  
for more information**

**ABT**  
ADVANCED BLASTING  
TECHNOLOGY INC

P.O. Box 598 • Watertown, NY 13601 USA  
www.abtechinc.biz



# Lead Lines



Visit our  
Chapter Website  
<https://www.easternpaisee.com/>



**Samuel Long**  
Area Business Manager- US North

Orica USA, Inc.  
7000 Stitzells Road  
Greencastle Pennsylvania 17225  
E-mail: [samuel.long@orica.com](mailto:samuel.long@orica.com)  
Cell +1-717-494-9934



Eric S. Crosson  
Vice President  
717-507-3798  
[eric.crosson@gillrockdrill.com](mailto:eric.crosson@gillrockdrill.com)

903-905 Cornwall Road  
Lebanon, PA 17042  
717-272-3861  
800-334-3117  
Fax: 717-272-4140



**James M. Miller**  
**J.M. Miller, Inc.**  
[www.jmmillerinc.com](http://www.jmmillerinc.com)

301 Airport Road  
Indiana, PA 15701

(724) 349-8850 phone  
(724) 349-8852 fax  
(724) 388-7505 cell

[jmiller@jmmillerinc.com](mailto:jmiller@jmmillerinc.com)



**Pennsylvania 811**  
A Privately funded non-profit Pennsylvania Corporation



**SAFE  
EXCAVATION  
& COMPLEX  
PROJECTS  
CALL 811**

For Safe Excavation and Complex Projects many people believe that by notifying the One Call System of intended excavation they have completed all of their responsibilities with respect to the locating process. This is not the case. Notifying is only the first step, and there are several other important considerations.

Online Ticket Management is a web service application developed by Pennsylvania 811 to provide excavators and designers a way to view their notifications and facility owners responses.

- View current tickets or five years worth of tickets
- Access to tickets entered online or through the call center
- Search for a specific ticket with an assigned serial number or a series of notifications within a specific date range
- See real time responses from facility owners who were notified on a current ticket or search the system for stored responses (maximum of 5 years)

**Start today by requesting the application from your account**





# TRUSTED TECHNOLOGY. UNMATCHED EXPERTISE. EXPLOSIVE RESULTS.

Our expertise goes *beyond the bench* with a mindset focused on outcome-based fragmentation. Together, we can help you maximize your return on investment through solutions that reduce your total cost of operations while increasing your productivity.



Scan to connect with your  
local Account Representative

[dynonobel.com](https://dynonobel.com)

**DYNO**<sup>®</sup>  
Dyna Nobel



## Space Telescopes Capture NASA's Asteroid Slam With Striking Clarity

Written by Marcia Dunn, Associated Press  
Los Angeles Times, September 30, 2022

CAPE CANAVERAL, Fla. — The world now has stunning new photos of this week's asteroid strike, the first planetary defense test of its kind.

NASA released pictures Thursday of the dramatic event, taken by the Hubble and Webb space telescopes.

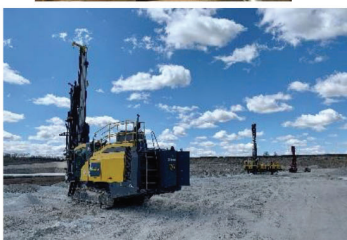
A few hours later, SpaceX and NASA announced that they're studying the feasibility of sending a private mission to Hubble — potentially led by a billionaire space tourist — to raise the aging telescope's orbit and extend its life.

Telescopes on all seven continents watched Monday as NASA's DART spacecraft slammed into the harmless space rock 7 million miles from Earth in hopes of altering its orbit.

Continued on page 16



- Oil & Gas
- Mining & Aggregate
- Construction & Foundation
- Waterwell & Exploration



Somerset, PA • Punxsutawney, PA • Norwich, OH  
[keystonedrill.com](http://keystonedrill.com) • [sales@keystonedrill.com](mailto:sales@keystonedrill.com)



**reichdrill**  
EUROFORGROUP

QUALITY  
DRILLING  
EQUIPMENT

**Patrick J. Garrity**  
President

U.S. Corporate Office:  
99 Troy Hawk Run Hwy.  
Philipsburg, PA 16866  
[www.rtdrill.com](http://www.rtdrill.com)

Ph: 814-342-5500  
Fax: 814-342-1135  
Cell: 814-308-4300  
Email: [pgarrity@reichdrill.com](mailto:pgarrity@reichdrill.com)



**Dave O'Brien**  
Area Manager

**Terra-Mechanics, Inc.**

P.O. Box 5137  
Limerick, PA 19468

Phone: 610-970-6950  
[www.Terra-Mechanics.com](http://www.Terra-Mechanics.com)

E-mail: [Dave.Obrien@Terra-Mechanics.com](mailto:Dave.Obrien@Terra-Mechanics.com)



PILE DRIVING      CONSTRUCTION      BLASTING  
DEMOLITION      PIPELINE      DRILLING

**RECOGNIZED WORLDWIDE AS A LEADING  
MANUFACTURER OF SEISMOGRAPH EQUIPMENT**



Our equipment allows you to monitor ground vibrations and air over-pressure with ease and accuracy. They can be used for most vibration and sound monitoring activities. This includes blasting operations, pile driving operations, construction equipment activity, environmental activity, ambient levels, and any other operation where a permanent record is needed. Our complete line of seismographs meets or exceeds ISEE standards

**CONTACT US TODAY FOR YOUR SEISMOGRAPH NEEDS**



## NASA Continued

Scientists won't know the precise change in the asteroid's orbit until November, but hope the experiment's results instill confidence in using the technique if a killer asteroid heads toward Earth one day.

"This is an unprecedented view of an unprecedented event," Johns Hopkins University planetary astronomer and mission leader Andy Rivkin said in a statement.

The photos will help scientists learn more about the little asteroid Dimorphos, which took the punch and ended up with a sizable crater.

The impact sent streams of rock and dirt hurtling into space, appearing in the latest photos as bright rays emanating from the asteroid.

Continued on page 17

**FRD** | **FURUKAWA**  
FURUKAWA **ROCK DRILL USA**  
ROCK DRILL DIVISION

Meeting the equipment needs  
of the mining and construction  
industries in Pennsylvania.



**HCR1100-ED ► HCR1100-ER ► HCR1450-EDII ► HCR1800-EDII ► DCR22 DTH**

Furukawa Rock Drills provide the ultimate combination of performance and economy. Built tough, our Top Hammer, DTH and Pneumatic Drills are equipped with features that maximize efficiency to assure high-performance at a low operating cost.

To learn more, visit us online at [www.FRDUSA.com](http://www.FRDUSA.com) or call **800.527.2282**.

**EW**  
**EAST WEST**  
DRILLING, INC.

Contact East West Drilling for information on FRD drills:

**Tony Morell**  
Eastern PA Sales Rep  
570.780.9325

**Michael Hoover**  
Western PA, OH, MD, North VA and D.C. Sales Rep  
570.452.1984

**MITSUBISHI**  
MITSUBISHI MATERIALS

## NASA Continued

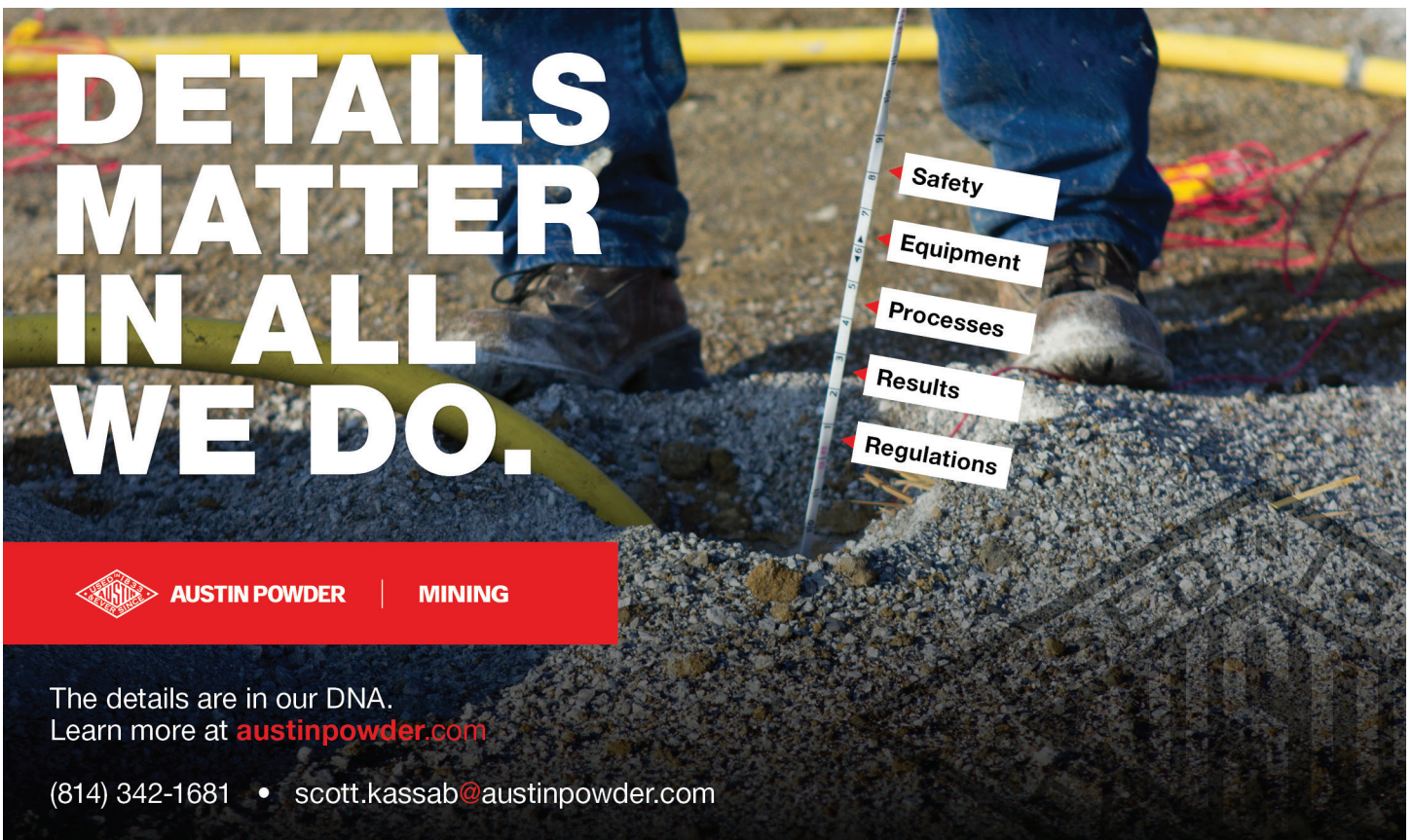
The brightness of this double asteroid system — the 525-foot Dimorphos is actually a moonlet circling around a bigger asteroid — tripled in the Hubble images after the impact, according to NASA.

Hubble and Webb will keep observing Dimorphos and its larger companion, Didymos, for several weeks. The \$325-million DART mission was launched last year. The spacecraft was built and managed by Johns Hopkins' Applied Physics Laboratory in Laurel, Md.

As for Hubble, NASA officials emphasized Thursday that the observatory, launched 32 years ago, is in good shape and might have another decade of life left.

Hubble's orbit is constantly shrinking, moving closer to Earth, but the telescope could have even more years ahead if it were boosted from its current 335 miles above Earth to 375 miles or more, scientists say. The six-month technical feasibility study by NASA and SpaceX also will consider whether any of Hubble's parts could be replaced, presumably by a crew.

Continued on page 18



# DETAILS MATTER IN ALL WE DO.

**AUSTIN POWDER** | **MINING**

The details are in our DNA.  
Learn more at [austinpowers.com](https://austinpowers.com)

(814) 342-1681 • [scott.kassab@austinpowers.com](mailto:scott.kassab@austinpowers.com)

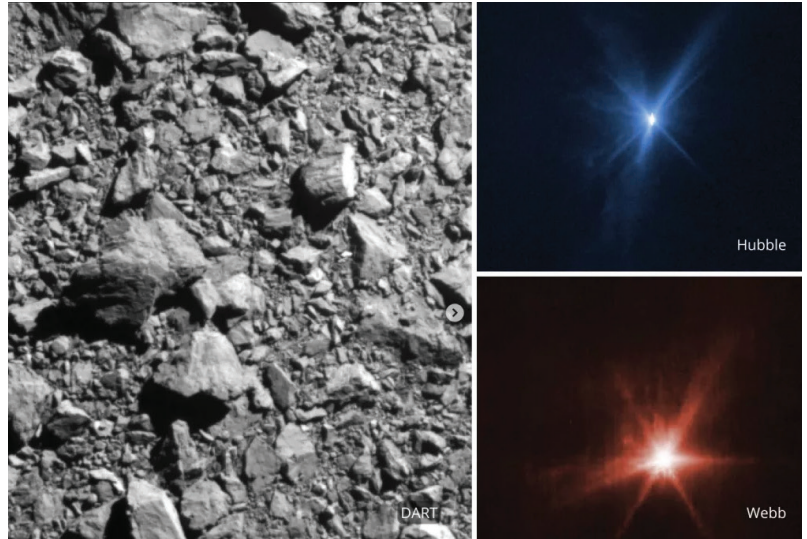




## NASA Continued

Jared Isaacman, a Pennsylvania tech entrepreneur who paid for his own SpaceX flight last year, said a Hubble mission, if approved, would fit nicely into his plan to take more spaceflights. But he stopped short of saying whether he was volunteering for the mission.

“We’re working on crazy ideas all the time,” Thomas Zurbuchen, NASA’s science mission chief, told reporters. “Frankly, that’s what we’re supposed to do.”



*A close-up view of Dimorphos, left, as seen by the NASA spacecraft DART before it crashed into the asteroid. The impact was viewed by the Hubble and James Webb space telescopes. (NASA via Associated Press)*

Drilling, Blasting and Foundation Services

**CELEBRATING** 1966-2021

**55 YEARS** AND COUNTING...

of unmatched quality service of local crews and management of technology-driven industry innovation and honest hard work

**MD&B** making it happen

**A Breed Apart**

717-933-5781 • [www.mdandb.com](http://www.mdandb.com) • Bethel, PA

**NOBEL INSURANCE SERVICES®**

*Insuring the Explosives Industry*

Charlie M. Pollard  
Marketing Director

122 WEST JOHN CARPENTER FREEWAY, SUITE 110, IRVING, TX 75039  
TEL. (800) 766-6235 x4121 • (972) 644-0434 x4121 • FAX (972) 644-0424  
[cpollard@lancerinsurance.com](mailto:cpollard@lancerinsurance.com) • [www.nobelinsurance.com](http://www.nobelinsurance.com)  
*A Division of Lancer Insurance Company*



ISEE ANNUAL CONFERENCE ON

**EXPLOSIVES & BLASTING** | **2023**  
TECHNIQUE

ADVANCING THE SCIENCE AND ART OF EXPLOSIVES ENGINEERING.

Feb. 3-8, 2023  
San Antonio, Texas



**ISEE**  
International Society  
of Explosives Engineers



## 2022 NEW MEMBERSHIP APPLICATION OR MEMBER RENEWAL FORM

Name (Please Print) \_\_\_\_\_ Date \_\_\_\_\_

Company Name \_\_\_\_\_

Mailing Address \_\_\_\_\_

City \_\_\_\_\_ State \_\_\_\_\_ Zip \_\_\_\_\_

Home Phone \_\_\_\_\_ Work Phone \_\_\_\_\_

Email Address \_\_\_\_\_

List Blaster Licenses Held \_\_\_\_\_ Are you a member of the I.S.E.E.? \_\_\_\_\_

### Please select your membership type:

- ☐ **Individual** - Chapter dues are \$35.00 per year.
- ☐ **Deluxe Corporate Membership** - Dues are \$250.00 for up to 10 members plus a 1/2 page ad in the quarterly newsletter (\$180 value). Please list name, email address and ISEE status for all members.
- ☐ **Corporate Membership** - Dues are \$150.00 for up to 5 members plus a business card ad in the quarterly newsletter (\$60 value). Please list name, email address and ISEE status for all members.

---

---

---

---

I agree to comply with the Constitution, By-Laws and Regulations of the Chapter.

\_\_\_\_\_  
Signature of Applicant

### Payment can be made by credit card or check. Please select your payment option.

- ☐ Credit Card - Visit the Chapter website to pay online (<http://www.easternpaisee.com/membership/>) or contact Ethan Huff to pay over the phone.
- ☐ Check - Please make checks payable to **Eastern PA Chapter I.S.E.E.**

**Send to: Ethan Huff**  
**c/o Vibra-Tech Engineers, Inc.**  
**109 East First Street**  
**Hazleton, PA 18201**  
**[ethanh@vibratechinc.com](mailto:ethanh@vibratechinc.com)**



# Lead Lines



## Advertising 2022

Place your Ad!

Full Page (1 Issue)	\$100.00	Full Page (4 Issues)	\$300.00
1/2 Page (1 Issue)	\$60.00	1/2 Page (4 Issues)	\$180.00
1/4 Page (1 Issue)	\$35.00	1/4 Page (4 Issues)	\$110.00
Business Card (1 Issue)	\$20.00	Business Card (4 Issues)	\$60.00

Name \_\_\_\_\_ Date \_\_\_\_\_

Company \_\_\_\_\_

Address \_\_\_\_\_

Day Phone \_\_\_\_\_ Fax \_\_\_\_\_

Ad Size \_\_\_\_\_ No. Of Issues \_\_\_\_\_

Check enclosed in the amount of \$ \_\_\_\_\_

**Payment can be made by credit card or check. Please select your payment option.**

☐ Credit Card - Visit the Chapter website to pay online (<http://www.easternpaisee.com/advertise-with-us/>) or contact Ethan Huff to pay over the phone.

☐ Check - Please make checks payable to **Eastern PA Chapter I.S.E.E.**

**Send to:** Ethan Huff, c/o Vibra-Tech Engineers, Inc.  
109 East First Street  
Hazleton, PA 18201  
[ethanh@vibratechinc.com](mailto:ethanh@vibratechinc.com)