



# Lead Lines



Eastern Pennsylvania Chapter  
International Society of Explosives Engineers  
[www.easternpaisee.com](http://www.easternpaisee.com)

Volume 28 Number 4

Fall 2021

The Eastern PA ISEE welcomes requests for topics, and invites readers' letters and other contributions that relate to drilling, blasting, seismology and explosives engineering.

#### Executive Committee

Scott Mueller, President

215-518-9833

Ethan Huff, Vice President

570-455-5861

Ethan Huff, Treasurer

570-455-5861

John Benedict, Secretary

570-401-4897

#### Board of Directors

Chris Balshi 610-282-8900

Ron Eichler 865-469-7315

Don Haney 570-729-0405

Dave Harrison 724-449-6250

Danny Ray Leach 717-574-4024

Justin Smith 610-926-7070

Doug Rudenko 570-455-5861

Rusty Taft 814-766-2211

Matt Tomlin 610-965-2444

#### Regulatory Committee

John Benedict

#### Program Committee

Danny Ray Leach

#### Training Committee

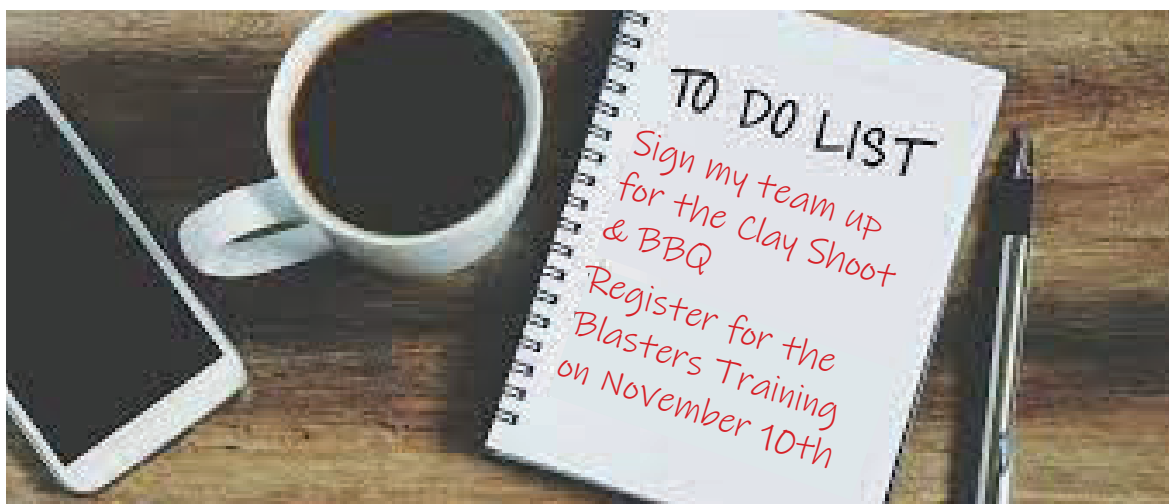
Dave Harrison

#### Membership Committee

Doug Rudenko

#### Newsletter Editor/Webmaster

Kristin Klemish



## Clay Shoot & BBQ

Thursday, October 28, 2021  
11:30am - 5:30pm

FREE for Members or \$35 for Non-Members

## 2021 Blasters' Training Wednesday, November 10, 2021

8:00am - 5:00pm  
(Registration begins at 7:00am)

\$100/person for Eastern PA Chapter Members

\$135/person for non-members (registration includes 2021 Eastern PA Chapter Membership)

# Lead Lines



## Letter from The President

Dear Members,

We have a busy fall planned for our Chapter Members!

Everyone is getting excited for the 5th Annual Clay Shoot & BBQ on Thursday, October 28, 2021. Last year we had a record number of attendees. I hope to see the same crowd plus new faces this year. You can register as a team of 4 or we will place you on a team. The registration forms can be found on pages 4 & 5.

Together with the Mid-Atlantic Chapters, we are hosting a 2021 Blasters' Training event on Wednesday, November 10th in Altoona, PA. Registration is online. You can check out our great lineup of speakers on pages 8 & 9.

I am excited to see that the ISEE Annual Conference on Explosives and Blasting Technique will resume in January as an in-person conference. Check out page 18 to learn more.

Best regards,

Scott



Drilling, Blasting and Foundation Services

**CELEBRATING** 1966-2021  
**55 YEARS** AND COUNTING...

of unmatched quality service  
of local crews and management  
of technology-driven industry innovation  
and honest hard work

**MD&B** making it happen

A Breed Apart

717-933-5781 • [www.mdandb.com](http://www.mdandb.com) • Bethel, PA

**Dimension Supply**

Energetics for Industry

---

**DIMENSION SUPPLY, Inc.**  
1034 Oak Grove Road, Morrisdale, PA 16858  
814/571-2484 C 814/343-4700 O 814/343-4800 F  
[jkwitaker@verizon.net](mailto:jkwitaker@verizon.net)

---

**Kirk Whitaker, President**

**American Rock Mechanics, LLC**

LEHIGH VALLEY'S  
PREMIER DRILLING AND BLASTING COMPANY

610-965-2444

[www.amroc.us](http://www.amroc.us)





## Eastern Pennsylvania Chapter Clay Shoot & BBQ

On Thursday, October 28th the Eastern Pennsylvania Chapter will host it's fifth annual Clay Shoot and BBQ. Join us at 11:30am for a BBQ lunch followed by a mandatory 12:30pm safety class and 1pm start at the Lehigh Valley Sporting Clays course in Coplay, PA.

The event is FREE for members. Non-members will be charged \$35 for a Chapter Membership. Registration includes a BBQ lunch, 8 station course with 50 rounds, and friendly competition. Ear protection is provided. You are encouraged to bring eye protection or purchase glasses for \$10.00. Prizes will be awarded for the top three shooters as well as Lewis class shooter placements. We will be raffling off a Weatherby Over/Under 12 Gauge 26" with 3" Chamber Shotgun.

If you are interested in registering, please complete the attached form on page 4. We also have station sponsorship opportunities available.

**BBQ Sponsor:** Austin Powder Co.

**Ammo Sponsor:** BlueStone, Inc.

**Gun Raffle Sponsor:** Rocky Rift Consulting

**Station Sponsors & Raffle Prize Donations:**

Blasters Tool & Supply \* Dimension Supply, Inc.

Dyno Nobel \* East West Drilling \* EPIROC

Gill Rock Drill Company, Inc.

Independent Explosives \* Instantel

International Society of Explosives Engineers

J.M. Miller, Inc. \* KEMEK \* Maurer & Scott \* Mincon

Nobel Insurance Services \* NOMIS

Pennsylvania One Call System

REICHDRILL \* Sandvik Mining and Rock Solutions

Sauls Seismic \* Stemlock, Inc.

Vibra-Tech Engineers, Inc. \* Wampum Hardware Co.





# Eastern Pennsylvania Chapter Clay Shoot & BBQ



**Thursday, October 28, 2021**

**FREE for Members**

**\$35 for Non-Members**

**11:30am - 5:30pm**

**Lehigh Valley Sporting Clays**

**2750 Limestone St., Coplay, PA**

Name\_\_\_\_\_

Company\_\_\_\_\_

Address\_\_\_\_\_

Phone\_\_\_\_\_ Fax\_\_\_\_\_

Email\_\_\_\_\_

**Deadline to register is Thursday, October 21, 2021**

Your registration includes a BBQ lunch, 8 station course with 50 rounds and a golf cart per team of 4. Ear protection is provided. You are encouraged to bring eye protection or purchase glasses for \$10.00.

You can bring your own gun and ammo (7.5-9 lead shot only).

Prizes will be awarded!

The event is FREE for Members.

Non-Members will be charged \$35 for a Chapter Membership.

Non-members - please complete the membership form on page 21 and this registration form to sign-up.

**Send to:**

**Eastern PA Chapter I.S.E.E.**

**Ethan Huff**

**c/o Vibra-Tech Engineers, Inc.**

**109 East First Street, Hazleton, PA 18201**

**ethanh@vibratechinc.com**



# Eastern Pennsylvania Chapter Clay Shoot & BBQ



## Sponsorship Commitment Form

☐

**Clay Shoot Station Sponsor for \$250**

Your company logo will appear on station sign

Contact Person \_\_\_\_\_

Company \_\_\_\_\_

Address \_\_\_\_\_

Phone \_\_\_\_\_ Email \_\_\_\_\_

**Please complete this form and email/fax it to Ethan Huff**  
**Email address: ethanh@vibratechinc.com Fax: 570-455-0626**

Payment can be made by credit card or check. Please select your payment option.

☐ Credit Card - An invoice will be sent via email to the address listed above  
(please make sure your email is clearly printed and accurate)

☐ Check - Please make checks payable to **Eastern PA Chapter I.S.E.E.**

Send to: Ethan Huff, c/o Vibra-Tech Engineers, Inc.  
109 East First Street, Hazleton, PA 18201



**MAURER & SCOTT  
SALES, INC.**

122 E. Thomas Street Office 610-282-8900  
Coopersburg, PA 18036-2100 Fax 610-282-9800  
Email: info@maurer-scott.com

*Rocky Rift Consulting, Inc.*

- Pre-Post Conditional Inspections
- Seismic Monitoring
- Damage Claim Investigation
- MSHA Training
- Blasting/Utility Inspector



DON HANEY  
966 Calkins Road  
Milanville, PA 18443

(570) 729-0405  
Cell (570) 656-2273  
dlhaney@ptd.net



## 2021 Blasters' Training Offered

The Eastern Pennsylvania & Mid-Atlantic ISEE Chapters will host a 2021 Blasters' Training on Wednesday, November 10, 2021 at the Blair County Convention Center in Altoona, Pennsylvania. The 1-day training will be held from 8am-5pm, with registration beginning at 7am.

Registration is \$100 per person for Eastern PA Chapter Members or \$135 per person for non-members (registration includes 2021 Eastern PA Chapter Membership). Your registration fee includes the training, boxed lunch and two breaks. Underground and Math breakout sessions will also be available.

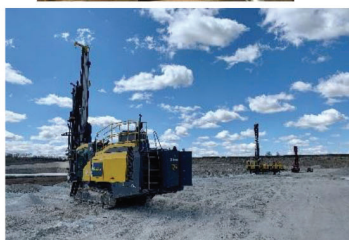
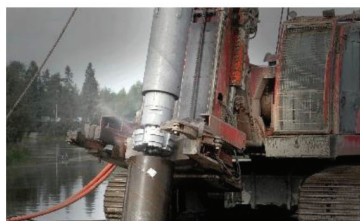
This training has been approved by the Pennsylvania DEP to satisfy the 8-hour continuing education credits required for license renewal. Certificates will be emailed to attendees following the training.

Exhibit space is available for \$250 for a 10x10 space. Your 10x10 booth space includes a skirted table and two chairs. Electric can be rented from the Blair County Convention Center.

Registration and payment is available online. To register or reserve your booth space, please visit <https://www.easternpaisee.com/event/2021-blasters-training/>.



- Oil & Gas
- Mining & Aggregate
- Construction & Foundation
- Waterwell & Exploration



Somerset, PA • Punxsutawney, PA • Norwich, OH  
[keystonedrill.com](http://keystonedrill.com) • [sales@keystonedrill.com](mailto:sales@keystonedrill.com)



**reichdrill**  
EUROFORGROUP

QUALITY  
DRILLING  
EQUIPMENT

**Patrick J. Garrity**  
President

U.S. Corporate Office:  
99 Troy Hawk Run Hwy.  
Philipsburg, PA 16866  
[www.rtdrill.com](http://www.rtdrill.com)

Ph: 814-342-5500  
Fax: 814-342-1135  
Cell: 814-308-4300  
Email: [pgarrity@reichdrill.com](mailto:pgarrity@reichdrill.com)



**Dave O'Brien**  
Area Manager

**Terra-Mechanics, Inc.**

P.O. Box 5137  
Limerick, PA 19468

Phone: 610-970-6950  
[www.Terra-Mechanics.com](http://www.Terra-Mechanics.com)

E-mail: [Dave.Obrien@Terra-Mechanics.com](mailto:Dave.Obrien@Terra-Mechanics.com)

# 2021 Blasters' Training

Hosted by the  
Eastern Pennsylvania and Mid-Atlantic ISEE Chapters



**Wednesday, November 10, 2021**

**Blair County Convention Center**

One Convention Center Drive, Altoona, PA

**8:00am - 5:00pm**

(Registration begins at 7:00am)

**\$100/person for Eastern PA Chapter Members**

**\$135/person for non-members** (registration includes 2021 Eastern PA Chapter Membership)

**Your registration fee includes the training, boxed lunch and two breaks**

**Underground and Math breakout sessions will be available**

**This training has been approved by the Pennsylvania DEP to satisfy the 8-hour continuing education credits required for license renewal.**

**Certificates will be emailed to attendees following the training.**

**Exhibit Space is available for \$250**

**Vendor registration includes 1 exhibit representative,  
a 10'x10' space with a skirted table and two chairs.**

**Electric can be purchased.**

**To register or reserve your booth space, please visit**

**<https://www.easternpaisee.com/event/2021-blasters-training/>**





## Blasters' Training Confirmed Speakers

**What not to Do When Transporting Explosives (Fatality Investigation)**

**R. Frank Chiappetta, Blasting Analysis International, Inc.**

**Crack Displacement and Vibration Measurement at an Underground Portal**

**Douglas Rudenko, PG, Vibra-Tech Engineers, Inc. and**

**Jay Elkin, Wampum Hardware Co.**

**Tools for Optimization**

**Bob McClure, RAM, Inc.**

**Underground Tunneling at the Atlanta Airport**

**Jon McGregor & Tim Banks, Dyno Nobel**



**Ed Ciocco**  
Account Manager  
eciocco@iexpesco.com  
484.614.9313

**Mark Proctor**  
Account Manager  
mproctor@iexpesco.com  
315.430.4683

2700 W. Center Street • Tremont, PA 17981



**JUSTIN SMITH**  
Drilling & Blasting Coordinator

**SCHLOUCH**  
INCORPORATED

Excelsior Industrial Park • P.O. Box 69 • Blandon, PA 19510  
Phone 610-926-7070, Ext. 123 • Fax 610-926-7171  
E-mail: jsmith@schlouch.com • Mobile 484-256-2025

**HAYDUK ENTERPRISES, INC.**

---

**1-800-542-5352**  
**BLASTING AND DRILLING**  
**JACOB HAYDUK**

257 Riverside Drive  
Factoryville, PA 18419  
e-mail: jacobhayduk@outlook.com

Local: (570) 945-3242  
Cell: (570) 903-1597  
Fax: (570) 945-5627



**TIM O'QUINN**  
SALES REPRESENTATIVE BOOM DRILLS & EXPLORATION

Sandvik Mining and Rock Technology  
3200 Highlands Parkway, Suite 200, Smyrna, Georgia 30082  
Mobile+1 276 312 2273  
timothy.oquinn@sandvik.com

ROCKTECHNOLOGY.SANDVIK



## Confirmed Speakers Continued

Using a High Speed Camera to Analyze Blasting Problems

Joe Nawrocki Sr., Dyno Nobel

A Hazards Analysis for Blasting

Lon Santis, Mine Safety and Health Administration (MSHA)

Check out the conference page to see a complete list of confirmed speakers!

**FRD** | **FURUKAWA**  
FURUKAWA **ROCK DRILL USA**  
ROCK DRILL DIVISION

Meeting the equipment needs  
of the mining and construction  
industries in Pennsylvania.



**HCR1100-ED ► HCR1100-ER ► HCR1450-EDII ► HCR1800-EDII ► DCR22 DTH**

Furukawa Rock Drills provide the ultimate combination of performance and economy. Built tough, our Top Hammer, DTH and Pneumatic Drills are equipped with features that maximize efficiency to assure high-performance at a low operating cost.

To learn more, visit us online at [www.FRDUUSA.com](http://www.FRDUUSA.com) or call **800.527.2282**.

**EW**  
**EAST WEST**  
DRILLING, INC.

Contact East West Drilling for information on FRD drills:

**Tony Morell**

Eastern PA Sales Rep  
570.780.9325

**Michael Hoover**

Western PA, OH, MD, North VA and D.C. Sales Rep  
570.452.1984

**MITSUBISHI**  
MITSUBISHI MATERIALS



An aerial photograph of a city, likely San Francisco, with a large, deep crater in the foreground. The crater is filled with debris and dust, and a car is visible on the rim. The city is visible in the background, with hills and buildings.

**YOU CAN'T MANAGE  
WHAT YOU DON'T MEASURE.**

GeoSonics  Vibra-Tech

**VIBRATION**

**GEOTECHNICAL**

**NOISE**

**DUST**

**ENVIRONMENTAL**

GeoSonics/Vibra-Tech provides expert monitoring and consulting services to help mitigate risk. Our Re:mote Monitoring Technology continuously collects and posts to a customized website, while keeping personnel notified through email and text alerts, so your data is always at your fingertips.

[geosonicsvibratech.com](http://geosonicsvibratech.com)



## The Difference Between Safety Helmets and Hard Hats

*Written by Nicole Baker, Sales and Customer Training Manager, HexArmor®*

*Reprinted with Permission from WorldWide Drilling Resource®*

Head protection is a big deal on the job, but when given two choices - a safety helmet or a hard hat - what should you reach for?

Hard hats are more commonly known to workers and have been around for over 40 years. Over the past four or five years, the traditional design has transitioned to a safety helmet. This is good news as the safety helmet brings much-needed upgrades - including better protection and fit - to one of the most used PPE (personal protective equipment) pieces on the job.



The concept behind this kind of head protection isn't new; it's been around for years in the sporting world. In fact, the same protection methods used in mountain climbing, biking, and other sports have been worked into the safety helmet design, with some featuring better side impact protection and a more secure and ergonomic fit for the wearer's head.

Continued on page 12

### **NOBEL INSURANCE SERVICES®**

*Insuring the Explosives Industry*

**Charlie M. Pollard**  
*Marketing Director*

122 WEST JOHN CARPENTER FREEWAY, SUITE 110, IRVING, TX 75039  
TEL. (800) 766-6235 x4121 • (972) 644-0434 x4121 • FAX (972) 644-0424  
cpollard@lancerinsurance.com • www.nobelinsurance.com  
*A Division of Lancer Insurance Company*



**Samuel Long**  
Territory Manager- US North

Orica USA, Inc.  
7000 Stitzells Road  
Greencastle Pennsylvania 17225  
E-mail: samuel.long@orica.com  
Cell +1-717-494-9934



## Hard Hats Continued

These upgrades offer better functionality and comfort for head protection used on the job just like it does for sport-lovers and athletes.

How to select the proper safety helmet. First, remember, the purpose of head protection in any safety program is to mitigate and/or eliminate hazards and exposure to injury while on the job. Being at risk for a head injury is dependent on your work environment and its associated hazards. Oftentimes, workers must wear protection even when there is no apparent sign of danger.

So, when choosing your head protection, take time to understand exactly what you need. Start by referencing OSHA (Occupational Safety and Health Administration) regulations for your industry to understand the type of head protection required. Is work being done at extreme temperatures, around electrical hazards, or at-height? These answers will point you in the right direction. Lastly, ensure the head protection you choose meets the ANSI Z89.1 standard for OSHA compliance.

Continued on page 14



**NORTHEAST SERVICE CENTER - HARRISBURG, PA**  
**717-287-4910**

**HERE TO SUPPORT ALL OF YOUR DRILLING NEEDS**



The Driller's Choice



**JIM CRAWFORD**

**NORTHEAST US ACCOUNT MANAGER**  
**717-975-7195**

**INNOVATING LOCALLY, LEADING GLOBALLY**

**Mincon.com**



PILE DRIVING      CONSTRUCTION      BLASTING  
DEMOLITION      PIPELINE      DRILLING

**RECOGNIZED WORLDWIDE AS A LEADING  
MANUFACTURER OF SEISMOGRAPH EQUIPMENT**



Our equipment allows you to monitor ground vibrations and air over-pressure with ease and accuracy. They can be used for most vibration and sound monitoring activities. This includes blasting operations, pile driving operations, construction equipment activity, environmental activity, ambient levels, and any other operation where a permanent record is needed. Our complete line of seismographs meets or exceeds ISEE standards

**CONTACT US TODAY FOR YOUR SEISMOGRAPH NEEDS**





## Hard Hats Continued

Additional factors should also be considered. The suspension system is a critical piece of the safety helmet; does the safety helmet fit properly and feel comfortable? Do you require use of accessories, such as hearing protection, face shields, or respiratory equipment? If so, make sure they are compatible with the safety helmet. Depending on the manufacturer, you can find protective options with new and improved technology to help increase performance and comfort on the job, such as a 6-point suspension system, permanent antifog face shields, and memory foam earmuffs.

Any further questions regarding how to properly select the right safety helmet for you can be answered by a safety helmet manufacturer who is experienced in helping companies find their ideal safety solution.



**Mass Rock Services, Inc.**  
*Drilling & Blasting Specialists*

[www.saundersblasting.com](http://www.saundersblasting.com)

***Come to Work for One of the Most Reputable Drilling & Blasting Companies in New England***

### **Experienced Blasters:**

- **\$90k - \$100k or more depending upon qualifications**
- **401K, Vacation, Health Insurance, Life Insurance**

Applicant should be able to lead and manage drilling & blasting operations to meet the customers' needs.

We are a relatively small Drilling & Blasting firm with a 30-year impeccable reputation for

**Integrity, Excellence, Performance & Safety.**

If you are a self-motivated individual with a good work ethic and would like to join our team and be involved in the entire process, please contact us.

**Experienced Drillers**  
**\$28.00-\$32.00 hour**  
**Plus Benefits**

**68 Main St.**  
**Lancaster, MA 01523**  
**O: 978-365-7611**  
**C: 978-265-4434 David Saunders**  
**dsaunders@saundersblasting.com**

**Helpers**  
**\$20.00-\$24.00 hour**  
**Plus Benefits**



## COVID-19 And Mining

COVID-19 is a respiratory illness that can spread from person to person. Miners and operators should take steps to prevent illness and spread of COVID-19.

### WHAT MINERS SHOULD DO:

- Wash your hands often with soap and water. If soap and water are not available, use a hand sanitizer containing at least 60% alcohol. Avoid touching your face, nose, and eyes.
- Cover coughs and sneezes. Always cover your mouth and nose with a tissue or use the inside of your elbow.

Continued on page 16



**PAT COSGROVE**  
VICE PRESIDENT

1150 Glenlivet Drive  
Suite # A21-22  
Allentown, PA 18106  
Office: (484) 364-5501  
Cell: (610) 984-7687

[pcosgrove@kemekllc.com](mailto:pcosgrove@kemekllc.com)



**James M. Miller**

**J.M. Miller, Inc.**

[www.jmmillerinc.com](http://www.jmmillerinc.com)

301 Airport Road  
Indiana, PA 15701

(724) 349-8850 phone  
(724) 349-8852 fax  
(724) 388-7505 cell

[jmiller@jmmillerinc.com](mailto:jmiller@jmmillerinc.com)



Epiroc Service Center  
4479 Chambers Hill Rd  
Harrisburg PA 17111  
717-257-9300

## COVID-19 Continued

- To protect others, wear a mask to block respiratory droplets made by coughs, sneezes, talking, or breathing when you aren't wearing your respiratory personal protective equipment (PPE).
- Put distance between yourself and others (stay at least 6 feet away, which is about 2 arm lengths). This includes not crowding personnel carriers, hoists, and elevators, or other means of transportation at a mine to maintain 6 feet of distance between you and others.
- Clean and disinfect frequently touched surfaces and equipment.
- Continue wearing and properly cleaning your personal protective equipment (PPE). Masks should not be worn if the miner is wearing a tight-fitting respirator.

### SYMPTOMS

People with COVID-19 have had a wide range of symptoms reported, ranging from mild symptoms to severe illness. Symptoms may appear 2-14 days after exposure to the virus. People with these symptoms may have COVID-19:

- Fever or chills
- Cough
- Shortness of breath or difficulty breathing
- Fatigue
- Muscle or body aches
- Headache
- New loss of taste or smell
- Sore throat
- Congestion or runny nose
- Nausea or vomiting
- Diarrhea

This list does not include all COVID-19 symptoms. Please call your healthcare provider for any other symptoms that are severe or concerning to you.

Continued on  
page 17

### CORONAVIRUS DISEASE 2019 (COVID-19) AND MINING

COVID-19 is a respiratory illness that can spread from person to person. Miners and operators should take steps to prevent illness and spread of COVID-19.

#### WHAT MINERS SHOULD DO:


- Wash your hands often with soap and water. If soap and water are not available, use a hand sanitizer containing at least 60% alcohol. Avoid touching your face, nose, and eyes.
- Cover coughs and sneezes. Always cover your mouth and nose with a tissue or use the inside of your elbow.
- To protect others, wear a mask (<https://www.cdc.gov/coronavirus/2019-ncov/protect-getting-sick/cloth-face-coverings.html>) to block respiratory droplets made by coughs, sneezes, talking, or breathing when you aren't wearing your respiratory personal protective equipment (PPE).
- Put distance between yourself and others (stay at least 6 feet away, which is about 2 arm lengths). This includes not crowding personnel carriers, hoists, and elevators, or other means of transportation at a mine to maintain 6 feet of distance between you and others.
- Clean and disinfect (<https://www.cdc.gov/coronavirus/2019-ncov/community/disinfecting-building-facility.html>) frequently touched surfaces and equipment.
- Continue wearing and properly cleaning your personal protective equipment (PPE). Masks should not be worn if the miner is wearing a tight-fitting respirator.

#### SYMPTOMS

People with COVID-19 have had a wide range of symptoms reported, ranging from mild symptoms to severe illness. Symptoms may appear 2-14 days after exposure to the virus. People with these symptoms may have COVID-19:

• Fever or chills	• Headache
• Cough	• New loss of taste or smell
• Shortness of breath or difficulty breathing	• Sore throat
• Fatigue	• Congestion or runny nose
• Muscle or body aches	• Nausea or vomiting
	• Diarrhea

This list does not include all COVID-19 symptoms. Please call your healthcare provider for any other symptoms that are severe or concerning to you.

[cdc.gov/coronavirus](https://cdc.gov/coronavirus)

## Rocklock Stemming Plug Improves Blasting Efficiencies

Advanced Blasting Technology, Inc.

RockLock Stemming Plugs are high-tensile, plastic spheres that reduce and control the random variables leading to borehole venting and stemming ejection. By improving confinement, RockLock improves fragmentation, enables the explosive to be loaded higher into cap rock and greatly reduces fly rock occurrences for optimum safety. In decking applications, RockLock enhances confinement eliminating deck to deck pressures improving vibration control and explosive performance.

<http://abtechinc.biz/>



**ABT**  
ADVANCED BLASTING  
TECHNOLOGY INC.





## COVID-19 Continued

### WHAT TO DO IF YOU HAVE SYMPTOMS

- Call your healthcare provider (doctor, nurse, or clinic) or local health department.
- Stay home, except to get medical care, and avoid close contact with others.
- Separate yourself from other people and pets in your home.
- Monitor your symptoms. Follow the care instructions from your healthcare provider and your local health department.
- Check with your local public health officials and follow state and local guidance for reducing the spread of COVID-19.
- Do not travel unless you absolutely have to.

### WHEN TO SEEK MEDICAL ATTENTION

If you develop any of the following emergency warning signs for COVID-19, call 911 and get medical help immediately:

- Trouble breathing
- New confusion
- Inability to wake or stay awake
- Pale, gray, or blue-colored skin, lips, or nail beds, depending on skin tone

Notify the operator that you have, or think you might have, COVID-19.

If possible, put a mask on before medical help arrives.



# DETAILS MATTER IN ALL WE DO.



AUSTIN POWDER

MINING

The details are in our DNA.

Learn more at [austinpowder.com](https://austinpowder.com)

(814) 342-1681 • [scott.kassab@austinpowder.com](mailto:scott.kassab@austinpowder.com)



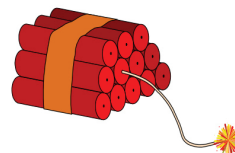
## Conference Registration is Open

Registration for the 48th Annual Conference on Explosives & Blasting Technique is open now! Join nearly 1,600 explosives industry professionals January 30 – February . 3, 2022, at the Paris Las Vegas Hotel and Casino in Las Vegas, Nevada for the world's largest conference in the explosives industry.



### Explosives Insurance

- Exclusive Program for over 25 years
- Dedicated Explosives Service Team
- Over 200 Explosives Clients
- In House Claim Specialist



Call us for a complete insurance review 800-980-9484

Billy Bangs ext 51742  
[bbangs@aga-us.com](mailto:bbangs@aga-us.com)

Jana Kostantewicz ext 51748  
[jkostantewicz@aga-us.com](mailto:jkostantewicz@aga-us.com)



A division of Marsh USA Inc.



# SERVICES EXPLOSIVES SOLUTIONS



**DYNO<sup>®</sup>**  
**Dyno Nobel**

Learn how our **SERVICES, EXPLOSIVES & SOLUTIONS** can improve your operations at **[DYNONOBEL.COM](https://www.dynonobel.com)**



## 2021 NEW MEMBERSHIP APPLICATION OR MEMBER RENEWAL FORM

Name (Please Print)\_\_\_\_\_ Date\_\_\_\_\_

Company Name\_\_\_\_\_

Mailing Address\_\_\_\_\_

City\_\_\_\_\_ State\_\_\_\_\_ Zip\_\_\_\_\_

Home Phone\_\_\_\_\_ Work Phone\_\_\_\_\_

Email Address\_\_\_\_\_

List Blaster Licenses Held\_\_\_\_\_ Are you a member of the I.S.E.E.?\_\_\_\_\_

### Please select your membership type:

- ☐ **Individual** - Chapter dues are \$35.00 per year.
- ☐ **Deluxe Corporate Membership** - Dues are \$250.00 for up to 10 members plus a 1/2 page ad in the quarterly newsletter (\$180 value). Please list name, email address and ISEE status for all members.
- ☐ **Corporate Membership** - Dues are \$150.00 for up to 5 members plus a business card ad in the quarterly newsletter (\$60 value). Please list name, email address and ISEE status for all members.

---

---

---

---

I agree to comply with the Constitution, By-Laws and Regulations of the Chapter.

\_\_\_\_\_  
Signature of Applicant

### Payment can be made by credit card or check. Please select your payment option.

- ☐ Credit Card - Visit the Chapter website to pay online (<http://www.easternpaisee.com/membership/>) or contact Ethan Huff to pay over the phone.
- ☐ Check - Please make checks payable to **Eastern PA Chapter I.S.E.E.**

**Send to: Ethan Huff**  
**c/o Vibra-Tech Engineers, Inc.**  
**109 East First Street**  
**Hazleton, PA 18201**  
**[ethanh@vibratechinc.com](mailto:ethanh@vibratechinc.com)**



# Lead Lines



## Advertising 2021

Place your Ad!

Full Page (1 Issue)	\$100.00	Full Page (4 Issues)	\$300.00
1/2 Page (1 Issue)	\$60.00	1/2 Page (4 Issues)	\$180.00
1/4 Page (1 Issue)	\$35.00	1/4 Page (4 Issues)	\$110.00
Business Card (1 Issue)	\$20.00	Business Card (4 Issues)	\$60.00

Name \_\_\_\_\_ Date \_\_\_\_\_

Company \_\_\_\_\_

Address \_\_\_\_\_

Day Phone \_\_\_\_\_ Fax \_\_\_\_\_

Ad Size \_\_\_\_\_ No. Of Issues \_\_\_\_\_

Check enclosed in the amount of \$ \_\_\_\_\_

**Payment can be made by credit card or check. Please select your payment option.**

☐ Credit Card - Visit the Chapter website to pay online (<http://www.easternpaisee.com/advertise-with-us/>) or contact Ethan Huff to pay over the phone.

☐ Check - Please make checks payable to **Eastern PA Chapter I.S.E.E.**

**Send to:** Ethan Huff, c/o Vibra-Tech Engineers, Inc.  
109 East First Street  
Hazleton, PA 18201  
[ethanh@vibratechinc.com](mailto:ethanh@vibratechinc.com)